



## EMPI Annual Meeting

A framework was established at the Uniting Healers Conference in Calgary, AB, Canada to ensure the continual growth of TYLEM™ worldwide.

This initiative is a means for all of us to benefit from the expertise of our practitioners and teachers. It will result in guidance and establish clear direction for our community moving forward.

**Sunday, March 15, 2009** will be the first face-to-face gathering of this leadership. Short term and long term goals are currently being established for the future that represents the collective inspiration of those committed to service of the worldwide effort. This meeting will be a first not to miss!

## EMP Faculty and Practitioner Annual Meeting

The Energy Medicine faculty and practitioners will gather on March 13, 2009 to enhance their skills in these two roles as well as grow spiritually and continue to move to a higher level.

The sense of community inspires and motivates as we share our unique local perspective and learn from each other the global picture.

Join this exciting community at our yearly renewal and spiritual attunement gathering for practitioners and instructors! March 13-14, 2009.

# The Healing Power of Nature Plants & Animals

|                   | Page |
|-------------------|------|
| EMAP 4-H          | 3    |
| Care Teams        | 4    |
| Kids-Helping Kids | 5    |
| Those Who Served  | 8    |
| Say What You Mean | 9    |



Journey with us as we explore the connections of humans, plants, animals and nature. We are ONE. What happens to one part affects all others and vice versa. Consequently if we live out of balance, it will be reflected in the decisions we make as partners in our loving relationships, with our spouses and our children — this includes our extended family and friends. It will be reflected in our work life and professional associations. Many major decisions get made and do not consider the ONENess of all things. We will explore that delicate interrelationship to find direction how to regain balance in our lives, with nature, plants and animals.

March 15, 2009  
Durham, NC

**Join us for the  
Australian Spiritual Journey October 2009**



**EMP Worldwide**  
3211 Gibson Road  
Durham, NC  
27703-4766 USA  
Water Lily (*nymphaea*)

energymedicinepartnerships.com  
**1-919-381-4198**

Symbolizes an openness to new opportunities for health, healing and spiritual growth.



**EMPI Executive Advisory Council**

- Dr. Mary Jo Bulbrook, President  
Durham, NC, USA  
Visionary Leadership and Integrating  
Programs/Resources Worldwide
- Dr. Ellen S. Kaye Gehrke, Vice-President  
San Diego, CA, USA  
International Organizational Development
- Marsha Read, Respected Elder  
Calgary, AB, Canada  
Sacred Songs and Traditions
- Dan Trollinger, Executive Director  
Durham, NC, USA, Implementation
- Dr. Dan Benor, MD, Bellmawr, NJ, USA  
Expansion of WHEE Worldwide
- Craig Pattinson, Treasurer  
Port Macquarie, NSW, Australia  
Finance and Creating Healing Environments
- Robert Maldonado, Arlington, VA, USA  
International Humanitarian Service
- Dr. Richard Watters, Nashville, TN, USA  
Energy Medicine Research and Certification Worldwide
- Suzanne Eismann, Secretary  
Raleigh, NC, USA  
EMPI Marketing and Professional Image

**EMPI Advisory Council**

- Judy Aufenthic, Lacrosse, WI, USA  
Nursing and Healthy Aging
- Thelma Shulyk, Calgary, AB, Canada  
Development of Energy Medicine in Canada
- Dr. Ronald Boivin, Edmonton, AB, Canada  
Intuitive Research
- Brenda McFie, Escorte, South Africa  
Development of Energy Medicine in South Africa
- Jane Frey, Edmonton, AB, Canada  
Uniting Energy Medicine Instructors Worldwide
- Sue Pattinson, Port Macquarie, NSW, Australia  
Integrating Color and Design
- Paul Afalla San Borja, Lima, Peru  
Health Care Professionals with Shamanism
- Cedric John (CJ) Hood Kwa-Zulu Natal, South Africa  
Blending Culture and Traditional Healers
- Judy North, Cardston, AB, Canada  
Serving Families Worldwide
- Twila Hayes, Val Marie, SK, Canada  
Connecting with Animals and Nature
- Cynthia Atkinson, Portland, ME, USA  
Uniting Energy Medicine Practitioners Worldwide
- Brenda Simmons, Denver, CO, USA  
Blending Energy Medicine in Health Care
- Sister Barbara Cavanaugh, Labanony, KY, USA  
Liaison with Serving the Poor Worldwide
- Kathleen Scacciaferro, VT, USA  
Energy Medicine in the High School Setting
- Joy Hardcastle, Durban, South Africa  
Energy Medicine and End of Life Care
- Kay Cooke, St. Louis, MO, USA  
Developing Intuitive Gifts
- Carol Reamer, Lima, Peru  
Development of Energy Medicine in Peru

## Spiritual Greetings



Dr. Mary Jo Bulbrook, CEMP/S/I  
Energy Medicine Partnerships  
Founder & Director  
Energy Medicine Partnerships  
International, President

November 12, 2008



**“May we learn to live in peace and harmony with plants, animals, rocks, trees, and all of nature. The health of the planet depends on it as well as our own health.”**

Fall has graced her presence in the Northern Hemisphere with brilliant colors that sooth the soul calling out to each of us to prepare to go within for winter’s inward call. Take time to reflect – evaluate the year and determine where you are in life – what works and what no longer serves your soul’s purpose. Be prepared to clear out the old and make room for the Presence to fill you with light. Be well, Be light, Be whole and Be holy in all you do.”

This newsletter brings closure on the year – offering the opportunity to reflect and regroup. In November our country honors those who served their country to the call of duty. My heart is filled with love and awareness how do we act responsibly for caring for those who answered the call to serve? I am here to remind those of us dedicated to health, healing and peace, to find ways to serve those who served for us. To this end I have created an Expressions for Healing card series (see page 8) that is finding its’ way to those in need through the network of families, friends and professionals. Let us be prepared to take responsibility for the seeds that have been sown – heal the wounds both obvious and not so obvious, for the service men and women and their families.

As we celebrate Thanksgiving in the USA in November, I am reminded how thankful I am for having you – the EMP family and friends in my life – soul companions dedicated to spread healing through energy medicine worldwide. Thank you, Thank you, Thank you.

Preparing then for the Holiday Season, remember not only those you love, but those who feel not loved. Find ways in your heart to expand your love from the commercialization of this season to the sacred celebration of all that is meaningful to you. Those of us from EMP and EMPI extend the warmest greetings for each and every one of you.

May the voices raised in songs throughout the month of December bring your vibration into sync to the fullness of life. Let peace on earth travel throughout the world.

This edition of the EMPI newsletter honors Marsha Read, respected Elder, holder of Divine Light, singer of EMP songs. Over the years Marsha has been a beacon of light and keeper of the sacred traditions. She gathers the energies as guided by spirit and helps many to move to deeper levels of awareness in their lives. She *knows* what it means to be Beautifully Human and Beautifully Divine and wants to live that with every breath that she takes. Marsha has entered a time of silence to regroup and replenish her soul so that she can continue to meet her goals as illustrated by the words from a song her friend in Sacramento, California wrote: To bring hope to every task I do. To dance at a baby’s new birth. To make music in an old person’s heart and *sing* to the colors of the earth. We join you with this song and celebrate you!

I bow before you dear friend and fellow companion on this journey. When you emerge from your hibernation we will embrace you with love and joy for your presence as a holy elder in our community.

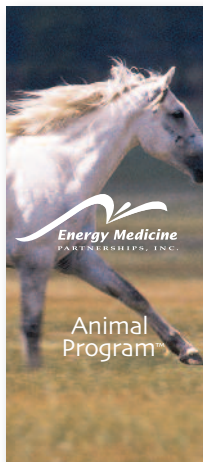
With love,  
Mary Jo



**Twila Hayes, Val Marie, SK, Canada**  
EMPI Advisory Council  
Connecting with Animals and Nature

Twila is a horse whisperer. She has an active horse and human healing practice in Western Canada and is a expert horsewoman. She has an extraordinary ability to connect with animals and communicate with them sensing their inner dynamics that affect their health and healing.

Following guidance and sensitivity, Twila creates a unique framework to assist animals in their healing process connected to their role with humans and the environment. Her leadership has brought additional expertise and joy to the community.



[www.awakeningspirit.com](http://www.awakeningspirit.com)  
306-298-4633

## 4-H Grant for Energy Medicine Animal Program For Kids



4-H Val Marie, SK

Designed for the 4-H population using the 4-H motto, "Learn to do by doing".

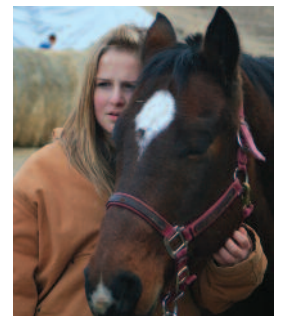
A grant made possible by Sears Young Futures 4-H Club November 2007 was awarded to Carol Masecar of the Val Marie 4-H Light Horse Club for Twila Hayes to offer Caring For Our Animals on November 11, 2008 in Val Marie, SK, Canada.

A group of eager boys and girls gathered together to learn caring for their animals. This program addressed the basics of energy medicine animal care as well as the unique features of healing of the self through our animal connections in harmony with nature. The focus was on horses also considering the impact on humans. Questions about dogs and cats and other small animals were addressed too.

The health and healing needs of animal came to life as the kids explored how to evaluate what is happening to the animal in relationship to what is going on around him/her. Through simple assessments using a heart centered approach the kids were able to determine the energy flow in animals and then use simple ways to balance the energy.

The pictures capture the spirit and interaction of the kids with the animals illustrating the success of hands-on learning.

We salute Twila for her leadership in this field and show our appreciation to Carol Masecar for providing this opportunity. Johane Janelle took the photos for this program. Thank you for capturing in pictures this historic gathering! We also would like to thank Sears Young Futures 4H Club for making this event possible for the children of Val Marie.

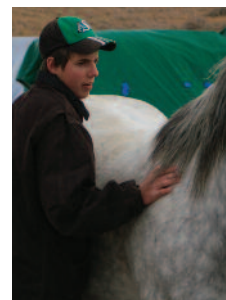


4-H Val Marie, SK

Twila can be contacted at [awakeningspirit@xplornet.com](mailto:awakeningspirit@xplornet.com)



4-H Val Marie, SK



**Energy Medicine**  
**Animal**  
**Program™**

eMail [contact@energymedicinepartnerships.com](mailto:contact@energymedicinepartnerships.com)



Dear Friends,

The inspiration for EMPI Care Teams for Energy Medicine Practitioners and Instructors has been brewing for some time now. It is now time to officially launch EMPI Care Teams!

As I approach my senior years I am fully aware that what I want for me is to be cared for by my friends who believe in the same things I do – not to be primarily cared for by some impersonal health care professionals who are not schooled in the value of Energy Medicine nor be a burden on my family. I realized I do not just want to HOPE someone will step up to the plate to help me from our TYLEM Practitioners and Instructors. I want to take some action!

I personally am dedicated to the call to humanitarian service especially to help serve each other with the unique gift of TYLEM™. During this season of opening our hearts, do consider volunteering for the EMPI Care Teams. A volunteer coordinator will contact you as the requests come forward to see if you are available.

**Mission:** Provides direct service using TYLEM as the primary intervention to support individuals needing care due to life transitions (end of life care, physical, emotional, mental, spiritual challenging health crisis), disaster or trauma relief, animal rescue, focused intention setting and prayer teams.

**Philosophy:** EMPI Care Teams are designed to offer to our members a unique service based on TYLEM and to support each other in the time of need. Caring for our own supplements traditional health care and family care in the time of crisis. The goal is to receive what we have given to others when we are faced with these challenges.

Our EMPI Care Team volunteers commit to provide direct service depending on their ability to do so at any point in time. Consequently when a request comes into EMPI we will work to find those who are available to provide the requested care.

**Implementation:** Your volunteer care hours are banked for your own personal care. We are considering a small monthly fee to offset service expenses. Team Nos. 1-2 are designed for Energy Medicine Practitioners and Instructors. Teams Nos. 3-4-5 are funded by Grants and/or donations and are open worldwide. No charge for Teams 6-7. We welcome discussion and feedback.

[careteams@energymedicinepartnerships.com](mailto:careteams@energymedicinepartnerships.com)

Energy Medicine Partnerships International is a 501 c 3 not-for-profit organization dedicated to promoting health and healing worldwide. Donations accepted to support the work of the organization.

# EMPI Humanitarian Care Teams

## Care Teams

**Team No. 1 – Health Crisis Care**

**Team No. 2 – End of Life Care**

**Team No. 3 – Disaster Care**

**Team No. 4 – Trauma Care**

**Team No. 5 – Animal Rescue Care**

**Team No. 6 – Special Intention Focus**

**Team No. 7 – Prayer Teams**

Calling for Volunteers for  
Membership on the Care Teams:

Name \_\_\_\_\_

Address \_\_\_\_\_

Contact Details \_\_\_\_\_

Level in TYLEM \_\_\_\_\_

EMP, CEMP, EMS, CEMS

List other professional training –  
\_\_\_\_\_

Volunteering for

Team 1  Team 2  Team 3

Team 4  Team 5  Team 6  Team 7

Send by email to

[contact@energymedicinepartnerships.com](mailto:contact@energymedicinepartnerships.com)





## Training Leaders for Working with Kids using TYLEM was held August 29, 2008 in Beechwood, New South Wales, Australia.

This workshop was designed for those who work with kids or parents who are interested in learning effective ways to help kids grow and change. Included was a two-hour experience with kids present to effectively illustrate energy dynamics that shaped their lives, how they can use energy medicine for themselves and with their friends. The kids worked with drawings, music, movement and energetic interventions.

The following story captures highlights of that experience. The kids group was small. I did not know before hand who was coming, so I did not have time to adequately prepare content for age specifics. Four children came – all four were girls, two age 15 and two younger -ages 10 and 9. I wondered how I could adequately teach with such a diverse age group and keep them occupied. As I greeted the little girls I asked them if they had any brothers and sisters. K remarked she had one brother who was 15. I took her to see the older girl who was there age 15 and asked if her brother was as big as she was. She shook her head yes. (This becomes important later and illustrates how spirit works with a teacher to help set the stage for deep healing.)

To break the ice, everyone was invited to draw a picture. That gave me a chance to observe and set the energy for what was to happen. I noted that one of the young

# Kids Helping Kids Australia



Building Lives · Building Families  
Building Community

girls copied exactly what her friend was doing to a T. She turned the page over when the other one did it and seemed to lack her own initiative to act. This seemed odd to me and I noted I would watch her to see if I could figure out energetically what this observation implied.

After doing the pictures I started teaching the whole group how to feel and experience energy with their hands on themselves first and then on others. The younger girl K's heart was compromised as I demonstrated on her using the pendulum. The demonstration was done for about 30 minutes. The two younger girls got up after that exercise, went to Craig Pattison and asked if they could go outside. I initially got upset when Craig told me they wanted to go out. Inside my head I said –“No, I need them to stay here and learn what I have to teach them!” Realizing it was useless to try to keep

them in, I said of course and sent one of the adults to go outside with them. I continued on teaching the older girls and found it was actually easier. I could address the content to the older age group and did not have to worry about how to reach a younger group.

After about 30 minutes the younger girls returned. The older ones were actively working with each other. I left the adults in training to continue working with the older girls. I walked over to the younger ones and asked what they did outside. I then asked if would they like to see how a pendulum worked. I started demonstrating on myself. This seemed to work and the girls paid attention and were able to feel the energy. I thought I had completed all that I could up to this point and started to end the session by asking them what they liked. J immediately stated “I like math and am very good at it. I like sports and am very good there too. I like science and am good at that.”

I just stood back and wondered what she was talking about, as it was not what I asked her. J is the one who copied the other girls work before acting on her own. What I found out later, J was very talented and got in trouble for being so fast and good at what she did. To cope with this she began to not show her strengths and just followed what others did.

K spoke up and said, “I am not good at anything.” She repeated this three times. I stepped back dumbfounded at her description of herself. Soon I said that I did not think that was true and asked who said that she was not good at anything. She reported her brother did. K is very small for her age. Remember the 15-year-old brother is very tall as she reported earlier to me. My first impression was that this child continually had the strong energy of someone she loved who continually energetically overpowered her with his unkind words. The little girl focus was on not being good enough. I knew then I had to work with K to help



her heal this wound. I stood back thinking how to help her and soon asked her friend if she had any ideas how we could help her. She thought for a moment and exclaimed, “She doesn’t have to listen to him!” Duh – kids helping kids! J thought of the answer before the teacher did!

I assessed to see how this issue was stored in the energy system and of course it was the heart – where she originally showed the compromise when we were just playing with energy. I showed her how to move energy from her heart and taught her Dr. Dan Benor’s “WHEE” technique. I instructed her to say this affirmation, “Even though my brother says I am not good at anything, I know that he is wrong. I am loved, valued and I am good.” Her friend jumped to write the saying down when I said we should write it so that she would have it with her whenever she needed help. K tapped on each shoulder repeating the message. I retested her and she was strong.

Then I invited the girls back to the larger group to close class. K quickly went to her seat and began to draw on her own without instruction. She was very, very intense and focused on what she was doing. I watched her as she was sitting in front of me and realized she was drawing a red heart. I said to myself – of course, that is what she presented with when she walked in class as her heart was compromised. After class she came in front of me smiling broadly and said. “I drew this heart for you Dr. Mary Jo!”

Tears came to me as I realized how profound a change this was for this young girl and the implications that for the rest of her life.



She had a tool to “reparent” herself when hurt by others. The power and lasting effect from this team effort was profound. Spirit was acting as sacred space was held to heal at deep levels in a fun way! K’s friend J was also helped as she learned how to not just be a smart bossy kids that others shied away from but to use her talents in partnership with her friend. She learned the concept automatically — “Kids Helping Kids.”

## Principles for Teaching Kids Helping Kids

1. Go with the flow. Be in the moment. Read the energy and act with what presents from Spirit. As you trust you will be shown the deeper issues to cover with the time you have.
2. Let go of your bias as a teacher. Monitor your own process continually and stay focused on the kids as being the leaders.
3. Keep it simple and specific to what is presented. Be totally present with the kids and build on what you know as a EM Practitioner as there is lots to choose from as the issue presents.
4. Notice the invisible cues during and after the work that led to the profound teachings. They are not often linear and easy to recognize.
5. The kids will show you by their ways how they liked what you did. In this case it was the spontaneous drawing that totally captured the depth of the healing illustrating K’s appreciation and recognition of what had just happened to change her energy.
6. The future was reshaped by this brief encounter. The child now has tools to reshape her destiny as the need presented. I suggested she asks her friends for help and to go to adults if she needs something else. When new issues present, the kids will need more teaching.
7. Recognize Divine Source working with you as a teacher and practitioner. When you dedicate your work to this level — move out of the ego and allow Divine Guidance in your life and work.

## Salute!

by Dr. Dan Benor  
MD, ABHM

I toast the yin and yang, the masculine and feminine, the darkness and light that each of us brings into this world individually.

I toast the meetings of opposites – that are the essence of consciousness separated from the Creator, a consciousness that is seeking its way home.

I toast the healing energies of this outstanding group that is contributing to the healing of these opposites, which must be healed if our planet is to survive.

Blessings!

*Uniting Healers Worldwide...*



*expressions  
for  
healing®*

an inspired storytelling process

[expressionsforhealing.com](http://expressionsforhealing.com)

[www.energymedicinepartnerships.com](http://www.energymedicinepartnerships.com)

Phone: 1-919-381-4198



Dr. Mary Jo Bulbrook  
RN, CEMP/S, CHTP, HTI

*This series of five stories*

were written to deal with the the problems our service men and women are and have experienced in answering the call to serve. As a healing community we must be aware and help to serve all of those affected by this global problem including the spouses, children and families. Lives have been dramatically shifted and the needs are great.

This story telling process has been used around the world to facilitate healing of the self and relationships with others. I encourage you to share

this document with those who you believe will benefit from it. Feel free to contact me with your responses as we move forward with a circle of love and light to ease pain and suffering.

With blessings and gratitude to those who served and their families.

*Dr. Mary Jo Bulbrook*

President of Energy Medicine Partnerships international



For Those Who Served

On The Front Lines

After Coming Home

For Those Left Behind

For the Children

*expressions  
for  
healing®*

### For Those Who Served

This series of story telling questions are written to help you deal with your experiences in serving your country. They are designed to help you process what happened to you and your family so that you can heal any pain and move forward.

Know that you are valued and remembered. Your contributions have not gone unnoticed.

1. This was my reason for answering the call to serve...
2. How I felt about serving then was... and now I feel...
3. At the time I thought...and now I think...
4. My heart in the beginning was... and now it is...
5. This is what I have to say about my experience...
6. I see my future now as...
7. Spiritually I am...

Ask for all 5 stories at [expressionsforhealing.com](http://expressionsforhealing.com) under **Contact us**



**Thelma Schulyk** Coordinator  
Phone: 1-403-288-3703  
eMail [tschulyk@telusplanet.net](mailto:tschulyk@telusplanet.net)

6411 Dalton Drive NW  
Calgary, AB CANADA  
T3A 1E1

**No on-line registration**  
Checque payable to **Thelma Schulyk**

## Spirit of Christmas Series

### Dr. Bulbrook Returns to Calgary – December 3-7, 2008

Wednesday,  
**December 3**  
6:00 pm – 9:00 pm  
Cost: \$40 if paid for  
before November 18, 2008  
and \$60 thereafter

**Angels I Need Help!**  
*wisdom  
inspiration  
support*

Thursday,  
**December 4**  
9:00 am – 3:00 pm  
Cost: \$60 if paid for  
before November 18, 2008  
and \$95 thereafter

**Heart Connections with Animals  
– for Relationship, Health &  
Healing** Explore the unique way  
Dr. Bulbrook works with animals to  
engage their spirit. Learn how to  
communicate with animals and how  
they communicate with us.

Friday,  
**December 4**  
4:00 pm – 6:00 pm  
Cost: \$20

#### **Kids Helping Kids Caring For Our Animals**

Animals can bring a lot of joy in our lives. Learn simple ways you can learn for yourself ways to care for the animals in your life and how to help your friends do the same.



Friday,  
**December 5**  
9:00 am – 4:00 pm  
Cost: \$75 if paid for  
before November 18, 2008  
and \$125 thereafter

**EM Practitioners,  
Instructors & Want to  
Be Instructors**  
What is happening energetically in  
my practice, in my teaching and in  
my desire to be a teacher. Identify  
the path to get clearer, stronger and  
empowered in new ways.

Friday,  
**December 5**  
6:00 pm – 9:00 pm  
No charge: Bring food  
and drinks to share

**Gathering and Christmas  
Celebration of our EM  
Community**  
Potluck Dinner, Music and  
Energy Dancing to Open  
the Heart

Saturday, Sunday  
**December 6 & 7**  
9:00 am – 4:00 pm  
Cost: \$250 if paid for  
before November 18, 2008  
and \$325 thereafter. Seniors  
over 65 and full time students  
\$25 off.

#### **In the Sprit of Christmas Come for Renewal, Healing & Recharge!**

Holiday times can be quite stressful and become a burden rather than a joyous occasion filled with spiritual renewal, deepening family and friendship connections and sharing love with others in need. Join Dr. Bulbrook with her unique blend of ceremony, ritual, and therapy using energy medicine blended with sacred traditions to clear out the past of outdated ways of celebrating the holidays and make way for new energizing delight in your life.

Open for everyone, individuals, families, beginners in energy work and seasoned practitioners of EM, HT and other modalities. Through intuitive insights this workshop is geared to open the holidays to a new level of peace and joy.



**EMP Worldwide**  
3211 Gibson Road  
Durham, NC  
27703 USA

Water Lily (*nymphaea*)

Symbolizes an openness to new opportunities for health, healing and spiritual growth.

[www.energymedicinepartnerships.com](http://www.energymedicinepartnerships.com)  
[contact@energymedicinepartnerships.com](mailto:contact@energymedicinepartnerships.com)

**1-919-381-4198**



Dr. Mary Jo Bulbrook





## Transform Your Life Through Energy Medicine TYLEM™ Fall 2008–Winter 2009

### TYLEM™ 1-5 In Calgary

Contact: Marsha Read, Faculty  
**403 542 7868**

Part 1 Thursday  
**January 22, 2009**

Part 2 Friday  
**January 23, 2009**

Part 3 Saturday  
**January 24, 2009**

Part 4 Sunday  
**January 25, 2009**

Part 5 Monday, Tuesday  
**January 26-27, 2009**

**Part 1** Energetic distortions can compromise health. Learn how to complete an in-depth assessment to identify distortions in the energy system and then practice interventions to move the energy and restore balance and energy flow.

**Part 2** Our lives are limited by physical, emotional, mental or spiritual wounds, which are energetically stored from the past. Learn how to release the blocks to energy flow and become free from the past.

**Part 3** Learn what beliefs are limiting your life and how to change them. Replace old, unhealthy beliefs with new ones that better serve your highest potential.

**Part 4** Through assessment, evaluation and treatment of the chakra system, you can change your relationships by altering your old energetic patterns.

**Part 5** This two-day course explores family energy patterns and provides techniques to change them through energetic interventions. Discover new ways of connecting between and among family members.

### Energy Medicine Classes In Edmonton

Friday  
**January 16, 2009** **EM Intro**

Contact: Ronald Boivin, Faculty  
**Mecemc@shaw.ca**  
or Jane Frey, Faculty (780) 998-7335

Saturday, Sunday  
**January 17-18 2009** **TYLEM™ 1-2**

**Part 1** Clearing the Internal Self  
**Part 2** Identifying and Healing Wounds

Classes are held at the Providence Center in Edmonton. Rooms available ahead of time for approximately \$40 per night. Please pay for rooms in advance of the classes. Room fees will be reimbursed if not used.

### TYLEM™ 1-5 In Durham, NC

Contact: Dr. Mary Jo Bulbrook, Faculty **919 381 4198**

Thursday - Sunday  
**January 6-11, 2009**  
9:00 a.m. – 6:00 p.m.  
8 contact hours each day

**Part 1** Clearing the Internal Self  
**Part 2** Identifying and Healing Wounds  
**Part 3** Changing Limiting Beliefs  
**Part 4** Healing Relationships  
**Part 5** Changing Family Dynamics

**January 10-11** EM 5 Falmouth, ME Cynthia Atkinson  
(207) 771-4488

**January 24-25** EM 1-2 St. Louis, MO Kay Cook  
(314) 773-8333

**January 23-24** EMAP Rochester, MN Dr. Mary Jo Bulbrook  
Lisa Van Getson (507) 272-2528

**January 30** EM 1 Rochester, MN Brenda Simmons  
Contact: Lisa Van Getson (507) 272-2528

**January 31** Practicum Rochester, MN Brenda Simmons  
Contact: Lisa Van Getson (507) 272-2528

### Energy Medicine Animal Program

Friday, Saturday  
**January 30-31 February 1, 2009**  
Fort SK, Canada

Contact: Tina Cojorcar  
**780 642-8442**  
Twila Hayes, Faculty

Energy Medicine Partnerships International presents

# “Say What You Mean, Mean What You Say”

National Institute of Environmental Health Sciences  
Research Triangle Park, NC

Wednesday,  
**November 19, 2008**  
9:00 am – 12:00 noon

Experience new ways to get across to others at work what you want and need to say to them. Holding back can only bring frustration, hamper the progress of your work and/or keep you from succeeding and thriving in your job.

In a relaxed atmosphere have fun while learning effective tools to get across information!

FACILITATOR

**Dr. Mary Jo Bulbrook, CEMP/S/I**

Founder and director of the Triangle Holistic Center in Durham, NC. President of Energy Medicine Partnerships International dedicated to bringing dynamic education in energy medicine throughout the world. Dr. Bulbrook is the Humanitarian Chairperson for the Comprehensive Association of Energy Psychology.



EMP Worldwide  
3211 Gibson Road  
Durham, North Carolina  
27703 USA

[www.energymedicinepartnerships.com](http://www.energymedicinepartnerships.com)  
[contact@energymedicinepartnerships.com](mailto:contact@energymedicinepartnerships.com)

919-381-4198

Energy Medicine Partnerships International presents  
“An Exploration of Energy Medicine  
and Organizational Dynamics”

Wednesday,  
**December 3, 2008**  
1:00 pm – 4:00 pm

\$50 for individuals  
\$120 for 3 or more persons  
from one organization

**Location:**  
Spiritual Directions  
Calgary Alberta  
1407 10th Street S.W.

**Thelma Shulyk** Coordinator  
Phone: **403 288 3703**  
6411 Dalton Drive NW  
Calgary, AB Canada T3A 1E1  
e-Mail: [tshulyk@telusplanet.net](mailto:tshulyk@telusplanet.net)

Organizations are people working in community towards a common goal. Energy Medicine in Organizations demonstrates how energy medicine theories, practices, ethics and interventions can positively influence the health and dynamics of organizations.

Sometimes we lose our way as a collective. People in the organization suffer and the organization suffers.

EM in Organizations explores the synergies between individuals and organizations from an energetic perspective and gives participants ample opportunity to share their thoughts and explore ways how energy dynamics, tools and interventions enhance life at work, ultimately improving the organizations productivity.

**Facilitators:**

Dr. Mary Jo Bulbrook  
Janice McDougall



EMP Worldwide  
3211 Gibson Road  
Durham, North Carolina  
27703 USA

[www.energymedicinepartnerships.com](http://www.energymedicinepartnerships.com)  
[contact@energymedicinepartnerships.com](mailto:contact@energymedicinepartnerships.com)

919-381-4198



# The Joy Foundation for Healing

The Joy Foundation for Healing is an Alberta Registered Non-profit Society that was formed in memory of Joy Spinelli in the summer of 2008. The objectives of the society are to provide financial assistance to persons of low income for the purpose of receiving complementary health care treatments including, but not limited to Energy Medicine, Reiki, Emotional Freedom Technique, Healing Pathways, and Healing Touch. The Society will also provide financial assistance to complementary health care practitioners in need for the purpose of attending complementary health care educational workshops or conferences.

We anticipate that the initial organization of the Joy Foundation for Healing will be complete in early 2009, and that funds will be available for applicants who qualify at that time.

A potential client will complete an application form providing the following information:

1. Client information
2. Practitioner information
3. Number of anticipated required treatments
4. Practitioner fee
5. Amount client can contribute towards fee (minimal \$5.00)

At the completion of the required treatments, the Society will pay the practitioner directly.

A practitioner completes an application form providing the following information:

1. Practitioner information
2. When the conference or workshop is scheduled
3. What the conference or workshop is about

4. Copy of the registration form for the conference or workshop
5. What the fees are
6. What the participant can contribute

Applicants who do not have previous training in complementary health care may qualify to apply for funding.

Joy Elizabeth Spinelli (nee Kochut) was born on October 13, 1939. She stayed in the sick children's hospital until she was two years old. She had a cleft palate and hair lip, along with other health challenges and endured numerous reconstructive facial surgeries before going home to her parents.

She suffered an extremely abusive childhood and throughout her life-time she developed many other health concerns. She had auto-immune liver disease, Meniere's disease, irritable bowel system, bipolar disorder, an enlarged heart, COPD, and in the end, congestive heart failure. Joy spent many years in group therapy and counselling sessions seeking to overcome her challenges, seeking joy, and seeking healing.

Despite her many challenges Joy had a wonderful sense of humor and was an extremely loving, generous and spiritual person. She was continuously looking for ways to assist other people, especially the financially disadvantaged, and was a strong community volunteer.

She was a firm believer in complementary health care treatments and found great joy in receiving treatments. She encouraged all the residents in her nursing home to receive treatments as well and loved to feel energy flowing through her own hands.

For the last few years of her life Joy was in and out of the intensive care unit. She was in great pain and felt that complementary health treatments not only helped her but helped all her friends.

On December 10, 2006 Joy was beginning to slip from this world and her beloved family was called to be with her. She received treatments all through that night and into the next day assisting her in transitioning from life to death. On December 11 she peacefully passed from this world and found the final joy and final healing she had sought.

Sometime after Joy passed away her daughter, Christine Steele, was meditating. As she meditated it came to her that Joy would have wanted to share the great peace, healing and joy she found in complementary health treatments with others no matter what their income.

And so the Joy Foundation for Healing was formed in memory of this brave and loving woman.

In order to set a budget and apply for grants and funding available to non-profit organizations, we need to know if you think your clients could benefit from the Society, and how much funding you anticipate your clients would apply for.

If you think your clients could benefit, or if you know of potential practitioners who might apply for assistance with registration fees for training, please be in touch with Christine Steele at [steeleheals@msn.com](mailto:steeleheals@msn.com)

We are gratefully accepting donations. If you would like to make a donation, please be in touch with Christine Steele at [steeleheals@msn.com](mailto:steeleheals@msn.com). Blessings

Christine Steele  
Energy Medicine Clinician  
Reiki Master & Teacher  
Healing Pathways Practitioner